



**ALASKA DIVISION OF HOMELAND
SECURITY & EMERGENCY MANAGEMENT**
SITUATION REPORT
25-23• January 23, 2025



Toll-Free 1.800.478.2337

Anchorage Area 907.428.7000

SEOC 907.428.7100

<p><u>SEOC Preparedness Level</u> Level 1-Routine Operations</p>	<p>http://ready.alaska.gov</p>	<p><u>National Terrorism Advisory System:</u> Read the NTAS Bulletin here</p>
<p><u>Maritime Security (MARSEC)</u> Level:1- Minimum Appropriate Security Measures</p>	<p>WHO Novel Coronavirus Pandemic (COVID-19): 2019 Novel Coronavirus</p>	<p><u>Alaska Military Installation Force Protection</u> <u>Level:</u> FPCON Bravo</p>

(Significant changes from previous situation reports are red.)

Significant Issues:

Selawik Water Infrastructure Disaster:

SEOC participated in a Recovery Branch call with Selawik and cooperating agencies yesterday afternoon. SEOC later joined the Selawik EOC call with DOH and ADEC and NWAB partners. Community has water available and is under a boil water notice. SEOC will continue to monitor and assist the community as needed.

Department of Health (DOH):

For current information, see: <https://health.alaska.gov/dph/Pages/default.aspx>
<https://health.alaska.gov/dph/Emergency/Pages/prepared/default.aspx>

NTAS Bulletin:

The U.S. Department of Homeland Security issued an updated National Terrorism Advisory Bulletin on May 24, 2023. The current and expired bulletins can be viewed at the below link.
<https://www.dhs.gov/national-terrorism-advisory-system>

Travel Alerts and Conditions:

For current driving conditions, dial 511 or visit: <https://511.alaska.gov/>

Barry Arm Landslide / Tsunami Risk:

For the latest information on the Barry Arm Landslide and Tsunami risk, click here:
<https://dggs.alaska.gov/hazards/barry-arm-landslide.html>

Earthquakes:

United States Geological Service (USGS) Earthquake Information: <http://earthquake.usgs.gov/>
National Tsunami Warning Center: <http://tsunami.gov/>

Alaska Volcanoes:

Great Sitkin Alert Level: **Watch** and Aviation Color Code: **Orange**

Mt. Spurr Alert Level: **Advisory** and Aviation Color Code: **Yellow**

For Alaska Volcano updates, go to: <https://www.avo.alaska.edu/>

Air Quality Index (AQI) Advisories:

For the most up-to-date Air Quality Index Advisories:

<http://dec.alaska.gov/Applications/Air/airtoolsweb/Home/Index>

Spills of Oil and Hazardous Substances:

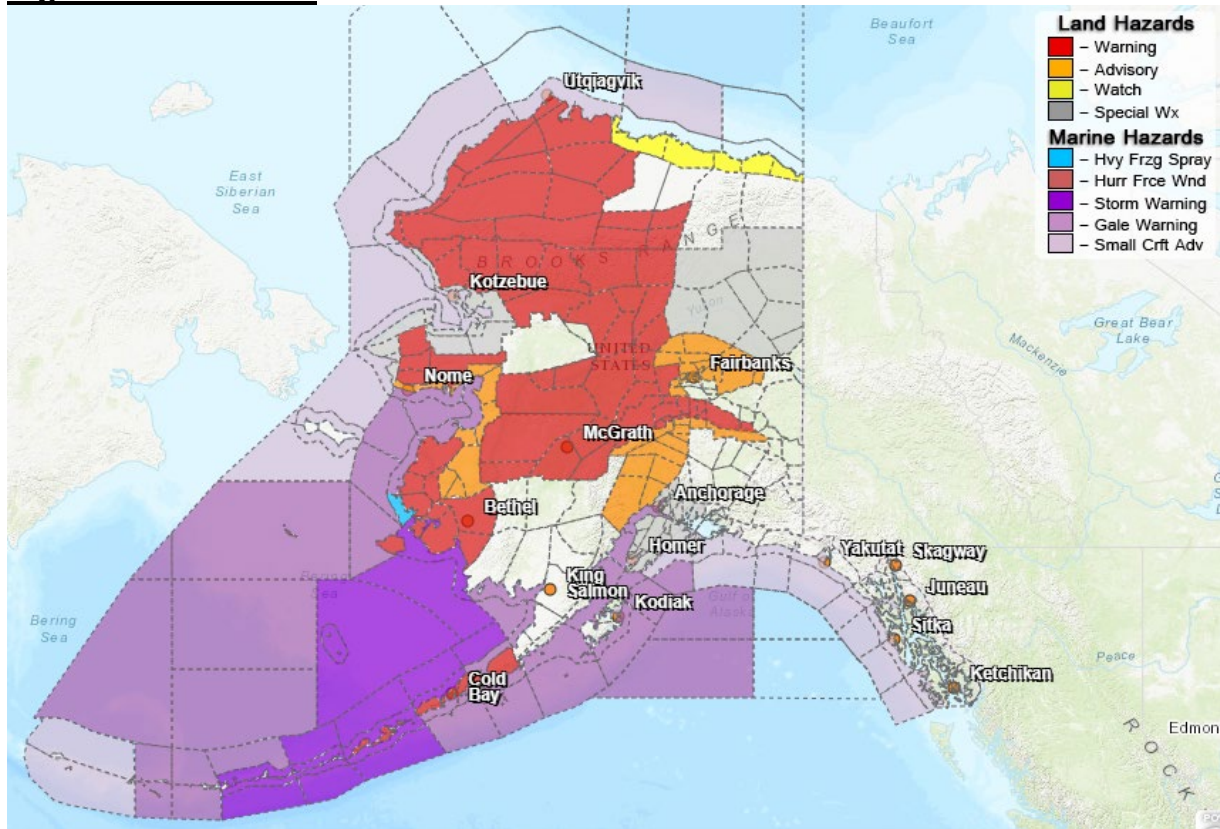
The Alaska Division of Environmental Conservation (ADEC) Spill Prevention and Response page is located at: <https://dec.alaska.gov/spar/>

Alaska Cyber Security Information:

State Employees may sign up for cybersecurity notifications and alerts at:

<https://oit.alaska.gov/security>

Significant Weather:



Special Weather Statement:

- **Kivalina and Red Dog Dock, Lower Kobuk Valley, Baldwin Peninsula, Northern Seward Peninsula, Shishmaref, Bering Strait Coast, Southern Seward Peninsula Coast, Eastern Norton Sound and Nulato Hills, Yukon Delta Coast**-possible water over ice along beaches Thursday night through Friday for Coastal Regions.
- **South Slopes of The Eastern Brooks Range, Yukon Flats**-heavy snowfall and rain likely for the Yukon Flats.
- **Eastern Aleutians**- periods of moderate to heavy rain today through the weekend across the Eastern Aleutians.

- **Kuskokwim Delta**- storm surge to bring possible overflow to Lower Kuskokwim River this afternoon into early Friday morning.

Winter Storm Warning:

- **Central Interior**-in effect from 3pm this afternoon to 6am Monday.
- **Yukon Delta Coast**-in effect from noon today to 6am Friday.
- **Interior Seward Peninsula**-in effect until 9am Friday.
- **South Slopes of the Western Brooks Range, Upper Kobuk Valleys**-until 10am Friday.
- **Noatak Valley**- until 3am Saturday.
- **North Slopes of the Western Alaska Range, Lower Yukon and Innoko Valleys, Upper Kuskokwim Valley** -until 3am Sunday.
- **Middle Yukon Valley**- in effect from 3pm this afternoon to 6am Monday.
- **Western Arctic Coast, Northwest Arctic Coast, Northern Arctic Coast, Western Arctic Plains, Howard Pass and the DeLong Mountains**-from noon Friday to 3am Saturday.
- **South Slopes of The Central Brooks Range, Upper Koyukuk Valley, Dalton Highway Summits**-from midnight tonight to 6am Saturday.

Winter Weather Advisory:

- **Eastern Alaska Range South of Trims Camp, Southern Denali Borough**-in effect until 9am Sunday.
- **Upper Chena River Valley, Goldstream Valley and Nenana Hills, Chatanika River Valley, Two Rivers, Fairbanks Metro Area, Nenana, White Mountains and High Terrain South of the Yukon River**-from this evening until 9am Sunday.
- **Southern Seward Peninsula Coast, Eastern Norton Sound and Nulato Hills**-until 9am Friday.
- **Lower Yukon River**-until 9am Saturday.
- **Susitna Valley**-until 6am Friday.

Winter Storm Watch:

- **Central Beaufort Sea Coast, Eastern Beaufort Sea Coast**-in effect from Friday afternoon through late Friday night.
- **Eastern Alaska Range South of Trims Camp**-winter weather advisory in effect until 3am Sunday.
- **Central Interior**-from 3pm this afternoon to 6am Monday.

High Wind Warning:

- **Northern Denali Borough, Eastern Alaska Range North of Trims Camp**-from 3am Friday to 9pm Saturday.
- **Central Brooks Range**- form 5am to 6pm Friday.
- **Eastern Aleutians**-until 10pm this evening.
- **Alaska Peninsula**-from 9am this morning to 1am Friday.

Hydrologic Outlook:

- **Anchorage, East Turnagain Arm; Matanuska Valley, Western Kenai Peninsula, Western Prince William Sound, Susitna Valley** -warm temps and widespread rainfall and elevated snow levels could lead to flooding concerns this weekend.

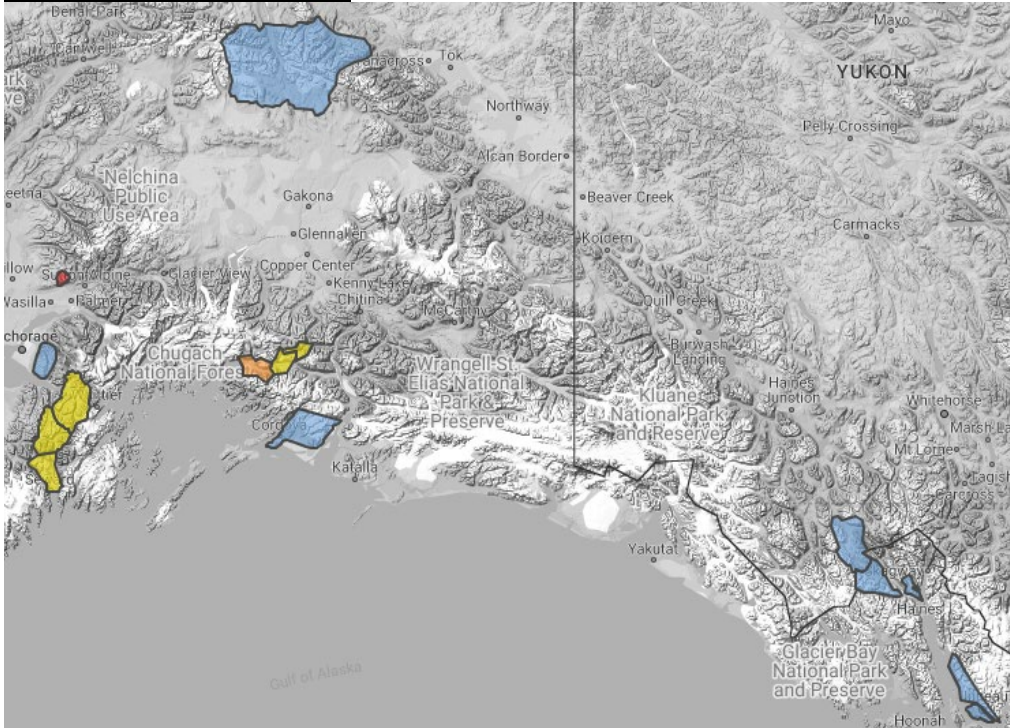
Coastal Flood Warning:

- **Kuskokwim Delta**- in effect until 9am Friday.

For more information and the most current Weather, Watches/Warning/Advisories go to:

<https://www.weather.gov/arh/>

Avalanche Conditions:



Summit Lake – Low below 1,000', Moderate above 2,500'.

Turnagain Pass – Low below 1,000', Moderate above 2,500'.

Seward and Lost Lake- Low below 1,000', Moderate above 2,500'.

Valdez Maritime- Moderate below 3,000', Considerable above 3,000'.

Valdez Intermountain, and Continental–Moderate at all levels.

Hatcher Pass- Moderate below 2,500', Considerable between 2500-3500', High above 3,500.

For more information and the most current avalanche conditions, go to: <https://alaskasnow.org/>

The Next Situation Report will be on **January 24, 2025**. An interim report will be prompted by a significant change in the situation or the threat level. This report is posted on the internet at <https://ready.alaska.gov/sitrep>.

To register for email distribution, PLEASE go to:

<http://list.state.ak.us/mailman/listinfo/dhsem.situation.report>.

Direct questions regarding this report to the SEOC at 907-428-7100 or seoc@alaska.gov.